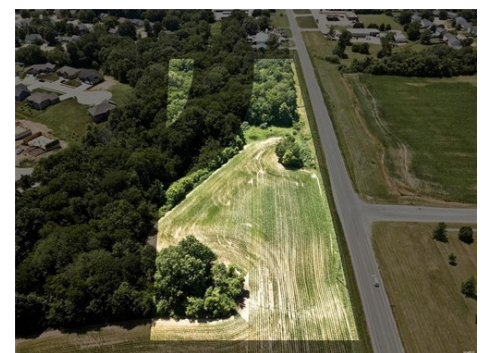




\$ 199,000



Highway 40, Troy, IL 62294

- » MLS #: 21084387
- » Farm/Ranch | Lot: 4.5 acres
- » More Info: 0Highway40Troy.IsForSale.com



Julie Purnell
 (618) 972-9052
 jpurnell@gorirealtors.com
 www.homesbyjuliepurnell.com



Gori Realtors, LLC
 212 St. Louis St
 Edwardsville, IL 62025
 (618) 659-5565

4.5+/- Acres with 950 feet of frontage on East State Highway 40 across from C.A. Henning School. Excellent potential for commercial business in a high traffic location (traffic count 9750 daily). Buyer to check zoning prior to making offer. All utilities to be verified by buyer. Subject to tenants rights for crops. Owner financing available.

